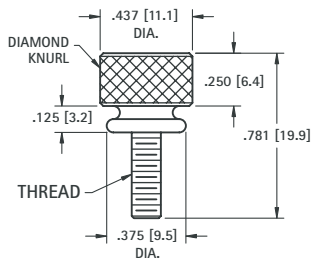


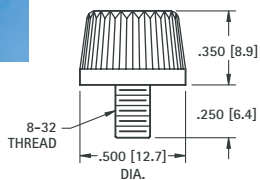
# THUMB SCREWS

For quick removal of panel from chassis. Other variations available



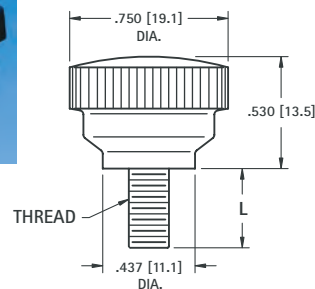
| CAT. NO. | THREAD |
|----------|--------|
| 1708     | 6-32   |
| 1709     | 8-32   |
| 1710     | 10-32  |

**MATERIAL:** Brass, Nickel Plate



**CAT. NO. 1711**

**MATERIAL:**  
Knob: Phenolic  
Stud: Steel, Zinc Plate



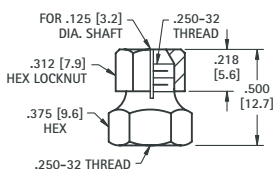
| CAT. NO. | L           | THREAD  |
|----------|-------------|---------|
| 1712     | .375 (9.5)  | 10-24   |
| 1720     | .500 (12.7) | .250-20 |

**MATERIAL:**  
Knob: Phenolic  
Stud: Steel, Zinc Plate

## SHAFT LOCKS

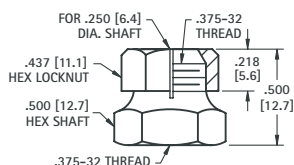
**MATERIAL:** Brass, Nickel Plate

For .125 (3.2) SHAFT



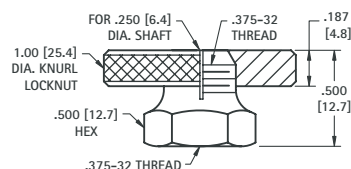
**CAT. NO. 1700**

For .250 (6.4) SHAFT



**CAT. NO. 1701**

For .250 (6.4) SHAFT



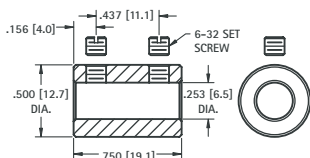
**CAT. NO. 1702**

## .250 (6.4) SHAFT COUPLING



• Two set screws hold shaft securely

**MATERIAL:** Brass, Nickel Plate  
Supplied unassembled

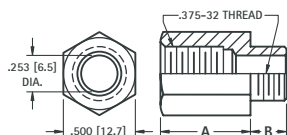


**CAT. NO. 1453**

## VOLUME CONTROL EXTENDERS



For .250 (6.4) volume control shafts having .375-32 threaded bushings.

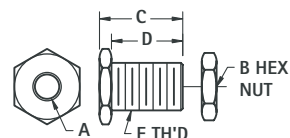


| CAT. NO. | A           | B           |
|----------|-------------|-------------|
| 1464     | .625 (15.9) | .250 (6.4)  |
| 1465     | .625 (15.9) | .375 (9.5)  |
| 1466     | .687 (17.4) | .500 (12.7) |
| 1467     | .750 (19.1) | .250 (6.4)  |

**MATERIAL:** Brass, Nickel Plate

## PANEL BEARINGS

STANDARD and MINIATURE



**MATERIAL:** Brass, Nickel Plate  
Supplied unassembled

| CAT. NO. | A          | B (HEX)     | C           | D           | E THREAD          |
|----------|------------|-------------|-------------|-------------|-------------------|
| 1705     | .253 (6.5) | .437 (11.1) | .500 (12.7) | .437 (11.1) | .375-32 Standard  |
| 1706     | .128 (3.3) | .343 (8.7)  | .437 (11.1) | .375 (9.5)  | .250-32 Miniature |

## PRECISION PANEL NUTS



For Volume Controls, Switches, Capacitors, Tip Jacks, etc.

| CAT. NO. | FOR           | THREAD  | DIAMETER     | THICKNESS   |
|----------|---------------|---------|--------------|-------------|
| 1448     | Mounting      | .250-32 | .375 Hex     | .093 (2.38) |
| 1449     | Mini. Control | .250-32 | .312 Hex     | .078 (1.98) |
| 1456     | Vol. Control  | .375-32 | .500 Hex     | .093 (2.38) |
| 1458     | Switch        | .468-32 | .562 Hex     | .078 (1.98) |
| 1459     | Switch Ring   | .468-32 | .625 Knurled | .062 (1.57) |
| 1472     | Filter        | .312-32 | .375 Hex     | .093 (2.38) |

**MATERIAL:** Brass, Nickel Plate